



# NSEDCC

Norton Sound Economic  
Development Corporation  
Spring Newsletter 2024



Board of Directors News,  
Search & Rescue, Outreach  
Sees Water & Sewer Success  
Page 2-3



Summer Employment,  
Seasonal Employment FAQ  
Page 4



Clean Waters for 2024, Summer  
Work as a Fisheries Technician  
Page 5



Homegrown and Giving Back  
Page 8



New Faces at NSEDCC,  
Employee Celebrations  
Page 10



Employees on-the-job at the Southern NSSP fish plant in Unalakleet.

## Summer Employment with NSSP

Summer season recruitment is underway for NSSP’s commercial fishery operations in Unalakleet and Nome. To extend these employment opportunities throughout the region, NSEDCC offers the Community Hire Program which covers travel and lodging for eligible residents in member communities. Meals and food are provided at the NSEDCC-supplied bunkhouse or residences. Or, in lieu of

lodging with NSEDCC, employees can choose to live with friends or family in Unalakleet or Nome and NSEDCC will provide a \$1,600 monthly stipend to the employee’s host family to cover room and board.

A variety of jobs are available in support of the busy summer commercial fishery operations. In Unalakleet, the processing plant focuses on salmon processing, receiving

*“Summer Employment” continued on page 4*

## NSEDCC and Salmon Bycatch

Alongside many other Norton Sound residents, NSEDCC is concerned with and paying close attention to salmon bycatch in the Bering Sea pollock fishery. The North Pacific Fishery Management Council (NPFMC) has again taken up the issue of chum salmon bycatch, with a focus on limiting the catch of those salmon that would return to western Alaska. NSEDCC and the residents we serve have a vested interest, given the importance of salmon to our region’s culture, food security, and local economy. This is balanced by the fact that NSEDCC owns and directs the harvest of nearly 10% of the pollock fishery resource

in the Bering Sea through quota allocated to us under federal law, as well as further investments we’ve made into the fisheries.

Federal and state scientists have put a lot of resources into examining the sharp downturn in salmon returns. They’ve concluded that environmental conditions are the primary cause of the poor runs, and that impacts from pollock fishing are relatively small, with pollock fishing neither causing nor preventing recovery from the stock declines. As we consider the impacts of the fisheries we participate in, we must also consider that NSEDCC has grown to where it is today largely through ownership of pollock

*“Bycatch” continued on page 3*

***NSEDCC will participate in the Bering Sea fisheries to provide economic development through education, employment, training, and financial assistance to our member communities.***



### NSEDCC Board of Directors

- Frieda Southall • Brevig Mission
- Frances Ozenna • Diomedede
- Art Amaktoolik • Elim
- Shirley Antogham • Gambell
- Dean Peterson • Golovin
- Melvin Otton • Koyuk
- James “J.T.” Sherman • Nome
- Milton Cheemuk • St. Michael
- Preston Rookok • Savoonga
- Harvey Sookiayak • Shaktoolik
- Morris Nashoanank • Stebbins
- Joe Garnie • Teller
- Frank Katchatag • Unalakleet
- Anna Oxereok • Wales
- Dan Harrelson • White Mountain



# On Board and Diving In

The NSEDC Board of Directors welcomed several new faces around the boardroom table over the past couple of years.

In 2022, Art Amaktoolik of Elim, JT Sherman of Nome, Preston Rookok of Savoonga, and Anna Oxereok of Wales were elected to their first full terms of service. In 2023, Frieda Southall of Brevig Mission and Shirley Antoghome of Gambell joined the table for their first full terms.

Art Amaktoolik shares that his focus in joining the NSEDC board was to “help my community in any way possible.” Art hopes his service on the board will enable benefits to continue to support his community, such as the Community Benefit Share, a valuable program extended to municipalities in each member community to utilize and distribute to address critical needs.

NSEDC board members are elected through a municipal election by their respective member community and serve a five-year term. If eligible, there is no limit to the number of times an individual may serve. They can be re-elected and

continue their service to the region for additional terms of five years. Directors meet quarterly for committee and full board meetings and again for special meetings throughout the year.

Frieda Southall is the new representative for Brevig Mission on the NSEDC board. Frieda says, “I hope to learn as much as I can and share what I can with our community.” Frieda believes NSEDC’s jobs and support for education across the region are not fully taken advantage of. “There is a lot of support

from our region that our people have to utilize for furthering their education. Anything is possible and it would be awesome to see more of our Alaska Native people filling jobs region wide; whether it is pilots, doctors, nurses, etc.” Frieda plans to focus her years of service on the opportunity to be a voice and advocate for Brevig Mission and the region as a whole.

The first quarter meeting for the NSEDC Board of Directors took place May 1-3, 2024.



From left to right, Art Amakoolik, JT Sherman, Preston Rookok, Anna Oxereok, and Shirley Antoghome at the May board meeting. Not pictured, Frieda Southall.

## Building Search & Rescue Resources



White Mountain Search & Rescue crew members join NSEDC’s White Mountain board representative, Dan Harrelson, on shore with the new airboat.

The community of White Mountain celebrated the arrival of a new airboat last summer purchased with NSEDC’s Outside Entity Funding (OEF) program to provide support for search

and rescue efforts between White Mountain, Elim, and Golovin.

Since 2003, NSEDC has annually set aside money to contribute to regional efforts to fund programs, projects, and activities benefiting member communities.

Funds allocated annually to the OEF program are divided equally between each NSEDC member community for projects conducted within that community. A volunteer community-based committee reviews completed applications that meet the submission deadline. Review committees include the community’s NSEDC board member and at least two other community members selected by that director.

Visit [nsecd.com](https://nsecd.com) to learn more about Outside Entity Funding.

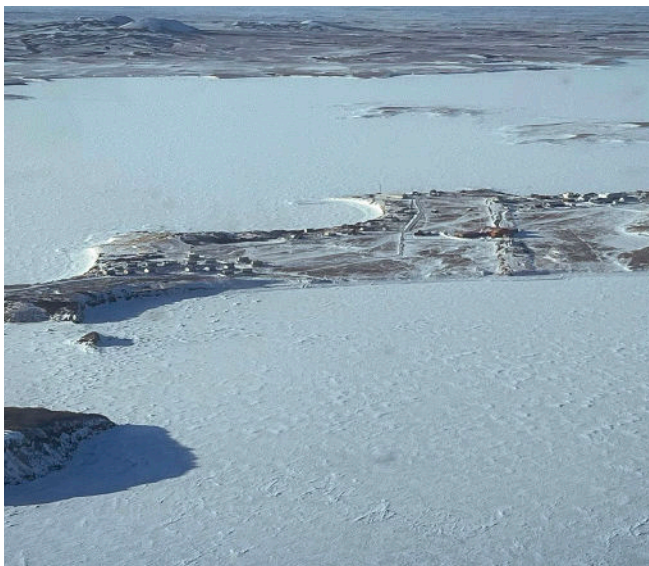


## Bycatch // continued from page 1

harvesting rights and investments in Bering Sea fishing operations. To put it simply, should pollock fishing be shut down, our regional and community programs, projects, and funding would shrink dramatically or be eliminated without an appreciable benefit to our salmon runs.

Recognizing and understanding the importance of salmon to our region, NSEDC continues to advocate to the NPFMC to ensure that their action focuses on protecting western Alaskan chum stocks. Genetic samples have shown that the majority of chum salmon caught in pollock fishing are fish produced in Russian and other Asian hatcheries. We feel it is important that a management decision doesn't unintentionally focus protections on the Russian hatchery fish and not our region's salmon. Genetic sampling has also shown that in 2023, less than 10% of the chum salmon taken as bycatch in the Bering Sea pollock fishery were of western Alaskan origin. Almost

69% were from Russian and Asian hatcheries, and almost 19% from the Eastern Gulf of Alaska and Pacific Northwest stock grouping (a significant portion of which likely came from hatchery production). Hatchery fish compete with our region's salmon for finite food resources in the ocean. With over 3 billion hatchery fish released into the North Pacific Ocean each year, that's a lot of competition. Our continued request to the NPFMC is to ensure that the salmon their management actions save are the ones coming home to the Norton Sound region and to our Alaskan neighbors along the Bering Sea coast. This will continue to allow us to invest in the sustainability of our communities through scholarships, the bulk fuel program, energy subsidies for households, community grants, fisheries research, regional commercial fishery support and the many other ways we support residents in our member communities.



Flying over St. Michael.



Paul Ivanoff visits with Virginia Tom in Stebbins.

## Outreach Sees Water & Sewer Success

Spring has sprung! The communities of Stebbins and St. Michael provided a warm welcome in late March for nearly a dozen NSEDC staff from throughout the operations. Members of NSEDC's administrative team and program managers traveled to the two communities to provide an overview and updates on NSEDC's programs and offerings to kick off this season's series of community outreach events.

The springtime sun welcomed NSEDC visitors who appreciated the strong turnout at the community meetings. In addition to sharing how each community has accessed NSEDC's programs and highlighting further ways to receive NSEDC's benefits, staff provided a presentation on opportunities

and resources for Stebbins and St. Michael residents to engage in regional commercial fisheries.

Following the presentations, NSEDC served 6-foot Subway sandwiches, salad, and dessert to those in attendance, giving staff time to visit with the community members who make our region the amazing place it is. "There is no better way to see both the impact NSEDC's programs have as well as the areas where further assistance may be needed than spending time on the ground." said President and CEO Janis Ivanoff. "We know that each of NSEDC's 15 member communities have unique attributes and needs, and being able to visit with residents and community leaders gives us a better understanding of what those

"Outreach & WSF" continued on page 5



### What's Fresh?

Stay in touch with NSEDC on Facebook! Find out what's for sale at NSSP and get updates on programs, scholarships, & more!



[www.facebook.com/nsecd](https://www.facebook.com/nsecd)



## Summer Employment // continued from page 1

salmon from commercial fishermen at the dock, off-loading the boats, and staffing the processing facility. Once in the facility, salmon pass through employees' hands as they are gutted, headed, filleted, and packaged for shipping.

In Nome, during the red king crab season, dock crews unload totes of red king crab from fishing vessels. Each tote is crane-lifted from the vessels and carried by forklift to the holding tanks, where live crab can be held fresh before entering the processing plant. In the plant, employees rake the crab from totes and move them along an assembly line to break down the bodies and isolate legs for cooking, freezing, and packaging.

The Nome plant also handles the offload, processing, and shipping of halibut, cod, and salmon.

NSSP has a variety of opportunities for seasonal employees with different job duties. If you are interested in seasonal employment or have any questions regarding a job, send us an application, and we'll be in touch!

Join our summer plant crew!  
Apply online at [nsedc.com](http://nsedc.com).



Employees at Southern NSSP in Unalakleet trim and clean salmon fillets for packaging.



Fresh from a vessel, totes of live red king crab await processing by plant employees at Nome's Northern NSSP plant.

# FAQ

## SEASONAL JOB OPPORTUNITIES WITH NSSP

### Where is housing for seasonal employees in Nome located?

For 2024, NSEDC is providing multiple housing units for member community residents who come to Nome to work. Planned lodging is right across from the plant, near Kawerak's offices, and more centrally located in town. All will be within reasonable walking distance to Hanson's Safeway store and to Norton Sound Seafood Products.

### Where is the seasonal employee bunkhouse in Unalakleet located?

The bunkhouse in Unalakleet is located next to the fish plant and is minutes from the A.C. store.

### How long is a typical workday?

Plant activity can increase or decrease depending on the influx of crab, salmon, and halibut from fishers on a

particular day. Plant employees need to be flexible and willing to work long hours as needed.

### Do employees get paid overtime?

Yes, any hours worked in excess of 8 hours per day and 40 hours per workweek will be paid at time and one half.

### Does NSEDC cover my travel?

NSEDC provides eligible regional residents travel funding to Unalakleet or Nome at the beginning of the season and covers the employees' return home at the end of the season.

### Do I have to live at the bunkhouse?

No, if a plant employee from outside Nome or Unalakleet prefers to stay with friends or family, NSEDC will provide a \$1,600 monthly stipend to a host family for room & board.

### What happens if I need to go home during the summer season?

NSSP seasonal employees are able to request time off and travel home if needed. Mid-season travel costs are not covered by NSEDC.

### What gear do I need to work at the plant and what is provided?

NSSP will provide hearing & eye protection, aprons, and gloves. If you have a comfortable pair of rubber boots, please bring them. Otherwise, NSSP can assist with appropriate footwear.



# Standing Together to Oppose IPOP, LLC

The U.S. Army Corps of Engineers' (USACE) Pacific Ocean Division announced in late March that it has overturned the Alaska Division's decision to deny a permit to IPOP, LLC to dredge and mine for gold in the Bonanza Channel estuary east of Nome. In early April, NSEDC joined Solomon Native Corporation, Village of Solomon, Bering Straits Native Corporation, Kawerak, Inc., and Sitnasuak Native Corporation on issuing a written statement in support of protecting the fragile ecosystem in the Bonanza Channel and Safety Sound area.

Your Alaskan congressional delegation holds a unique opportunity to further delve into USACE's new approval of

IPOP, LLC's permit, which was initially denied by the USACE Alaska Division on September 8, 2022.

If you would like to join these organizations in expressing concern and opposition to the recent approval of IPOP's permit and in support of the protection of this valuable area, you can contact Alaska's congressional delegation and share your thoughts.

Read the full joint public letter here:



Online contact information for Alaska's congressional delegation:

Senator Dan Sullivan



Senator Lisa Murkowski



Representative Mary Peltola



Swans over Safety Sound. Photo by Bonnie Reynolds.

## Outreach & WSF // continued from page 3



Recently completed Stebbins Washeteria Facility, supported in part by NSEDC Water & Sewer funding.

are and how to enhance those strengths and address those needs.”

One project NSEDC staff were able to visit while in Stebbins is the new washeteria facility, funded in-part over a couple of phases through NSEDC's Water & Sewer Fund program. Stebbins recently completed work on this project, which now provides the community with six washer & dryer combo units and separate men's and ladies' washrooms. Phase one of the project covered the purchase of the facility. Phase two

provided funding for delivery and installment, building a foundation and arctic entryway, and connecting to fuel and electricity.

The City of Stebbins supported the project through local hire on the installation phase and has established a long-term plan with a local wastewater operator to oversee water samples and tend to regular required maintenance on the facility. NSEDC is proud to support this project to replace the old washeteria and provide a much-needed service to the community of Stebbins. NSEDC staff were excited to see the building and installation of the project completed and services up and running.

The NSEDC Board of Directors established the Water and Sewer Fund (WSF) to address critical water and sewer needs in Norton Sound member communities in 2019. The program allocates \$1 million per member community to support upgrades to or construction of water and sewer projects. The Water and Sewer Fund was established as a five-year program

that will sunset in 2024. To date, the communities of Brevig Mission, Diomed, Elim, Nome, St. Michael, Savoonga, Stebbins, Teller, and Unalakleet have accessed this funding opportunity and since 2019, NSEDC has invested over \$11 million dollars in regional water and sewer infrastructure projects across Norton Sound.

### Water & Sewer Funds distributed by funding year since 2019:

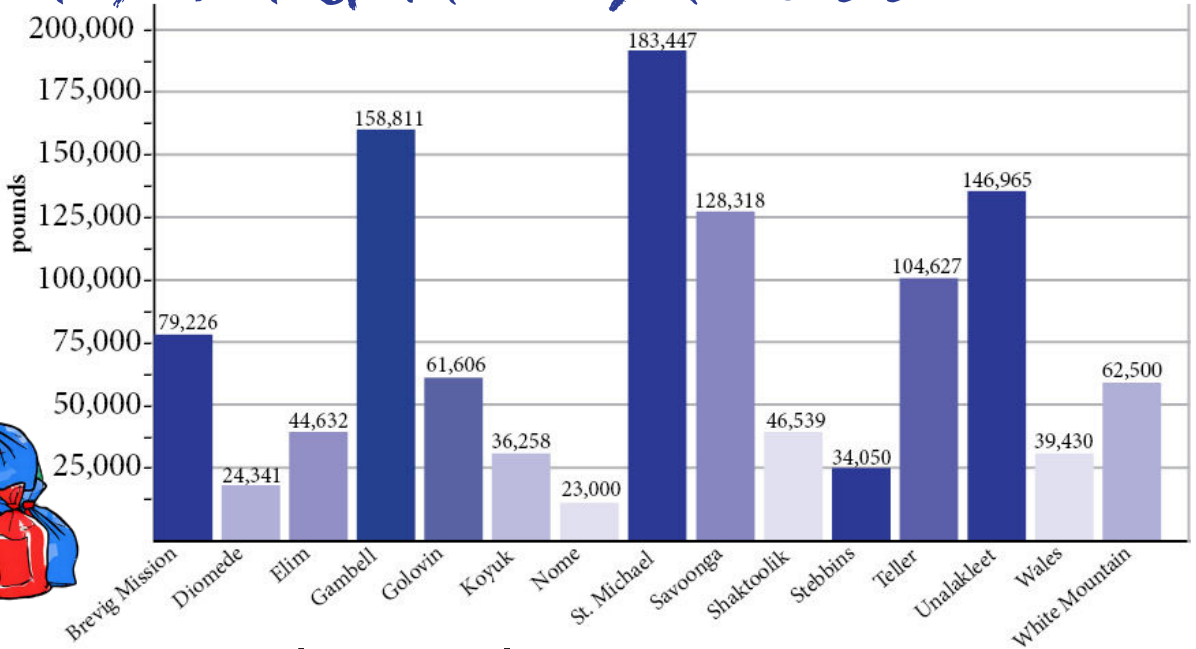
2019: \$470,683  
 2020: \$3,932,800  
 2021: \$4,337,933  
 2022: \$570,900  
 2023: \$2,064,773

### TOTAL: \$11,377,089 region-wide

NSEDC appreciated the hospitality in Stebbins and St. Michael during the March outreach trip. The opportunity to visit face-to-face with residents and to see community projects come to life creates an invaluable connection that continues to fuel the work we do day-to-day.

# Clean Waters: Debris Gathered Since 2006

This graph represents pounds of debris gathered in and around each NSEDC member community since 2006.



## Clean Waters: History and Future Plans

Every year, the winds and waves of Bering Sea storms bring ocean debris to the shores of Norton Sound communities. Storm surges bring flooding, loosening beach debris and depositing it inland as waters recede.

NSEDC realizes the value of keeping our shores clean for the health of our fish and wildlife and, by extension, for our communities. Norton Sound residents rely on marine resources for their livelihood and for nutritional and spiritual well-being. In addition to keeping our environment healthy, NSEDC's Clean Waters program focuses on a core aspect of our mission: to provide economic development through employment.

Since 2006, the Clean Waters program has hired over 250 crew members in our 15 member communities to comb riversides and beaches, free fish nets, salvage boats, gather plastic jugs, jerry cans, drums and other waste. The collected debris is properly disposed of in the local landfill. Program managers also focus on taking advantage of opportunities for grant funding and backhaul support in cooperation with regional and state agencies to extend the reach and impact of their cleanup efforts. Since 2006, NSEDC crews have gathered over 1.1

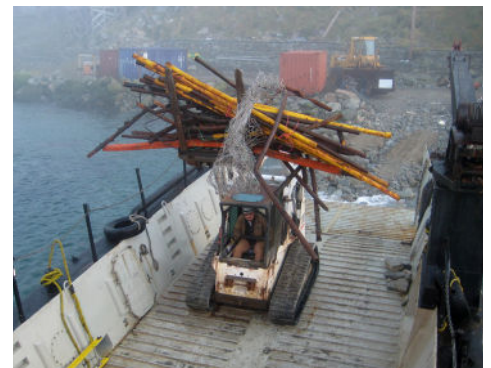
million pounds of debris from the shores of rivers and beaches across the Bering Strait region.

NSEDC's Fisheries Research & Development Department organizes the Clean Waters program. Unalakleet's Senior Crew Leader Fred Jay Ivanoff says one of the most valuable aspects of this program is, "being able to hire local community members where local jobs are limited." Fred Jay sees the benefits firsthand, as crewmembers have used this summer work to fund going off to college or trade school.

But the program doesn't go on without challenges. Once the waste is gathered, where does it go? Fred Jay envisions better cooperation across community entities to increase funding through grants from NOAA and SeaGrant for backhaul and recycling, for example, rather than sending more waste to the local landfill. Fred Jay says, "I'd like to encourage our regional IRA and Tribal offices to apply for grants. They could hire more people and they know the local area better." Together with NSEDC, partnerships like these could increase the impact of the Clean Waters program. For summer 2024, NSEDC's FR&D Department is planning clean-up efforts in Teller and Gambell.



Debris gathered on Golovin beach, 2008.



Diomedede loads the Egavik with debris for backhaul, 2011.



Crew gathers netting on the beach in Savoonga, 2012.

# Summer Work as a Fisheries Technician

Summer in western Alaska brings plentiful sunshine and opportunities for outdoor adventures! Why not get paid to enjoy the backcountry? NSEDC hires Fisheries Technicians each summer season to help with operations along our region's rivers at weir projects and fish counting towers in cooperation with the Alaska Department of Fish & Game.

NSEDC bases Fisheries Technicians out of both the Nome and Unalakleet offices, as well as in White Mountain, Koyuk, and Shaktoolik. From Nome, fish techs venture to the Eldorado, Pilgrim, and Snake River projects. The Niukluk counting tower is largely crewed by residents of White Mountain. From Unalakleet, NSEDC operates the North River tower. The Shaktoolik River tower is crewed by residents of Shaktoolik, and Koyuk residents staff the Ungalik River project.

On any given day, a fish tech could be stationed in the fish tower, counting and recording fish swimming upriver for 10-20 minute sessions, or collecting water temperature and depth data at specific times. Or they might be stationed at the weir, counting the fish that pass

through at predetermined times. Fisheries Technicians support each project site with setup, maintenance, and other duties as assigned. In addition, fish techs support salmon rehabilitation efforts in cooperation with NSEDC's Fisheries Research & Development Department. These projects include fertilization at Salmon Lake, fostering health of the Pilgrim River sockeye salmon run, and end-of-season egg-take projects; harvesting eggs from spawning salmon in the Snake River and Unalakleet River. In Shaktoolik, the fish techs also support FR&D staff with sonar projects in the area.

Current Fisheries Biologist John Wade started with NSEDC as a Fisheries Technician. John shares that his favorite part of the job was spending time outdoors and learning about rivers and places in the region. "I worked as a fish tech seasonally for the entire time I was in college," John says, "and with the job, I was able to afford to pay for college each year." While on the job, John enjoyed learning more about the mechanics of ATVs, boats, trucks, and other summertime backcountry equipment. He also valued the teamwork



Former Fisheries Technician Michelle Stwooko poses with a salmon at a weir.

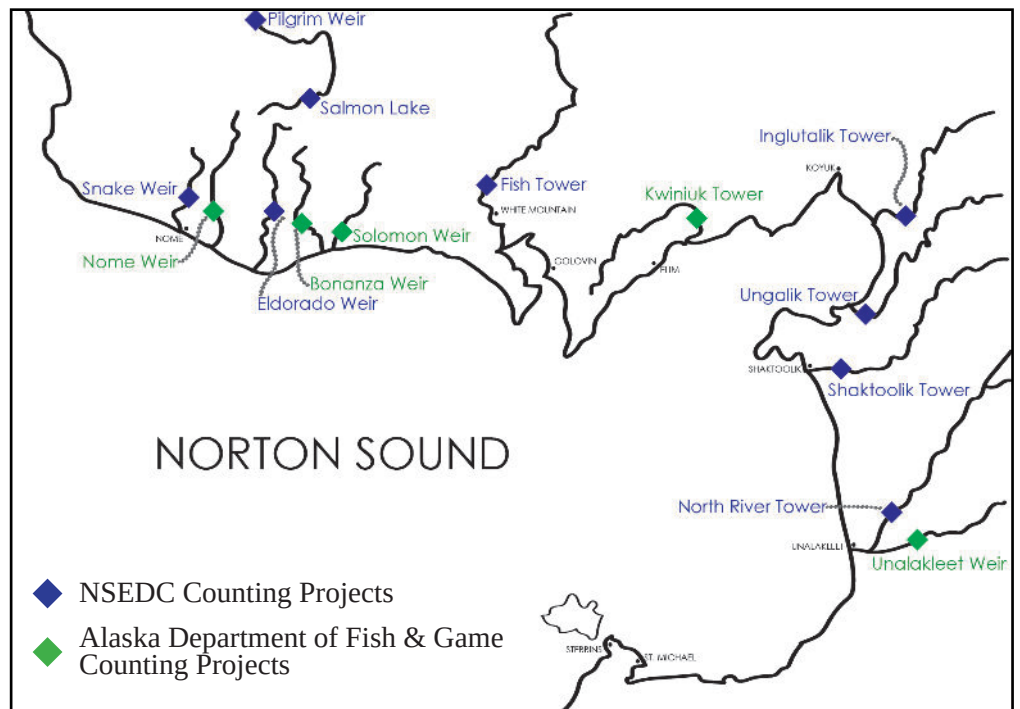
environment and the opportunity to build leadership skills through his position.

Join NSEDC as a summer Fisheries Technician!

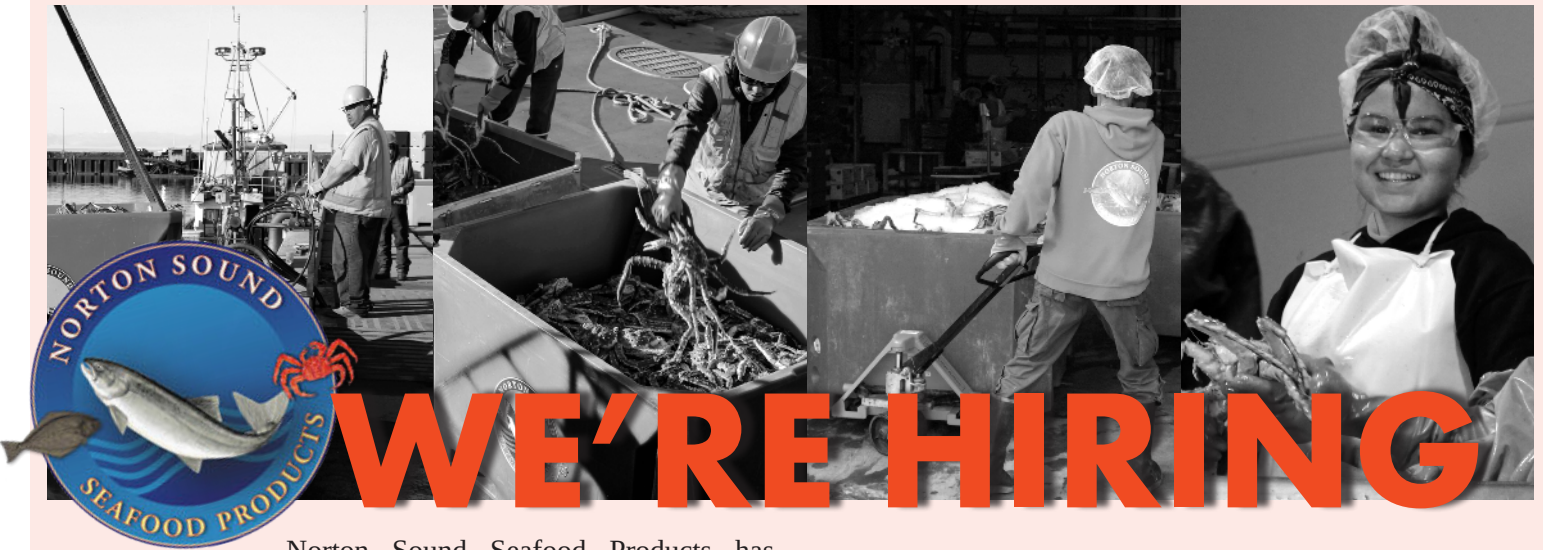
Apply online at [nse.dc.com](http://nse.dc.com).



Fish camp setup at the Pilgrim River weir.



NSFR&D and ADF&G summer operations, including fish counting towers and weirs in the Norton Sound region.



Norton Sound Seafood Products has seasonal jobs for regional residents every summer, offering competitive wages and opportunities to build skills for your future. Come work on a crew for NSSP this summer!

If you don't live in one of our seafood plant communities, NSEDC offers travel as well as housing or a stipend to friends or relatives to host your stay away from home through our Community Hire Program.

To find out more, connect with our human resources team at 907-274-2248 or email [hr@nsedc.com](mailto:hr@nsedc.com).

Visit [nsedc.com](http://nsedc.com) to learn more about seasonal employment opportunities!



## Homegrown and Giving Back

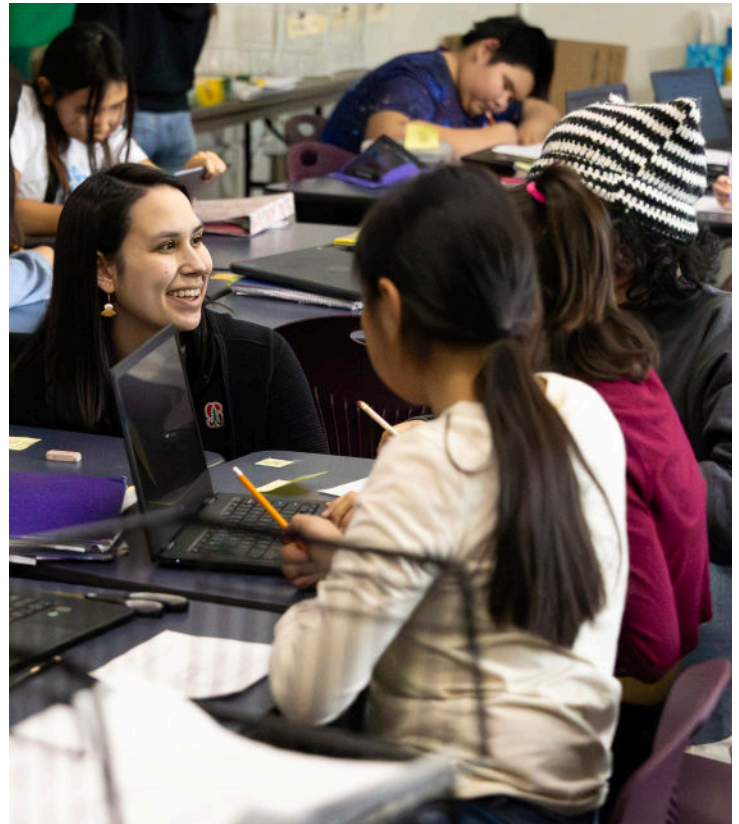
Since the establishment of the CDQ program, NSEDC has been investing in our region's future through scholarships to eligible Norton Sound residents to further their education and skills. Funding goes to support students pursuing degrees and training at colleges, universities, and training facilities in Alaska from Barrow to Juneau, and in the Lower 48, from the coast of California to the shores of New England.

NSEDC scholarship recipient and Nome resident Kastyn Lie received a bachelor's degree in English with a minor in education from California's Stanford University in the spring of 2023 and immediately jumped into a Master of Art in Teaching program through the University of Alaska Southeast in Juneau that summer. Lie has been in Nome the past few months, building hours and skills in the classroom to satisfy the requirements of her master's program.

Kastyn took some time to reflect and share about her educational journey.

### What inspired you to pursue teaching?

I have personally seen and experienced how one person can impact your future and how making decisions from a young age can be such a large factor in the outcome of your life. I want to be in the classrooms, working with students hands-on and teaching them that they can also make an impact and make the changes they want to see.



*Kastyn Lie works with students as a student teacher at Nome's Anvil City Science Academy.*



**What would you tell a high school junior or senior from our region thinking about going on to pursue post-secondary education or training?**

Believe in yourself and your abilities to perform well and keep up with the others around you! Taking on post-secondary education is a huge decision in itself, and more often than not, you'll find yourself surrounded by people who may not understand your experiences or where you came from. Remember to stay true to yourself and your goals, and don't let anyone else's expectations or perceptions deter you from pursuing your dreams. Your unique background and perspective can be valuable assets as you embark on this next chapter of your academic journey.

**What does graduating from college mean for you and for your family?**

To me and my family, graduating is a huge feat. For me, graduating signifies breaking barriers and overcoming obstacles to achieve my academic goals. It's a symbol of pride and accomplishment,

not just for myself but for my entire family and community, who have supported me every step of the way.

**What is something you wish someone had told you when you were about to go to college?**

I wish someone had emphasized the importance of networking and building relationships while in college. It's not just about getting good grades; connecting with professors, classmates, and professionals in your field can open doors to opportunities you never imagined. Building a strong network can help you find internships, job opportunities, and mentors who can guide you on your career path. Don't underestimate the power of forging meaningful connections—it can truly make a difference in your college experience and beyond.



*Kastyn Lie walks students through an in-class writing lesson during her student teaching at Nome's Anvil City Science Academy.*

Kastyn plans to graduate from the University of Alaska Southeast next spring and intends to return to her hometown of Nome to live and teach middle school.

**"Remember to stay true to yourself and your goals, and don't let anyone else's expectations or perceptions deter you from pursuing your dreams."**

**- Kastyn Lie**



**FALL SEMESTER SCHOLARSHIPS**

**Deadline June 30**

For vocational programs, apply two weeks before the first day of instruction.

**Are you a resident of the Norton Sound region enrolled in a full-time college, university, or vocational school program? NSEDC wants to support your educational goals! Utilize MyCache to apply for NSEDC funding and other regional scholarships, too!**



# Current Job Openings:

## Assistant Plant Manager (Nome):

The Assistant Plant Manager is responsible for the general supervision of all plant operations including production, quality control, maintenance, receiving and shipping. A high focus on continuous improvement to maximize productivity and minimize costs while ensuring safe and compliant operations are key responsibilities of the position. A bachelor's degree in business administration or a related field, and at least four years of seafood processing, management, and fishing industry experience or an equivalent combination of applicable education and experience are required.

## Facility & Fleet Manager (Nome or Unalakleet):

The Facility & Fleet Manager develops and provides oversight of maintenance and repair programs and procedures for NSEDC-owned facilities and vehicles. The position oversees repair and maintenance personnel. Requires a bachelor's degree in business, management, accounting, facilities or fleet management, or related field and at least five years of experience.

# NSEDC Welcomes New Faces!



**Sierra Anderson**  
*Human Resources Specialist*

Sierra Anderson was born and raised in Nome and has family from Nome, Shishmaref, and King Island. She graduated from Nome-Beltz High School and currently attends the University of Alaska Anchorage with a major in Biological Sciences and minors in Alaska Native Studies and Mathematics. In her free time, she likes to bead and sew.

Sierra is looking forward to working for NSEDC to learn and be a part of the benefits provided in our communities. Sierra says, "I applied to work with NSEDC to get a better understanding of how this corporation provides support for our region and its communities. I'm excited to work my first summer (and more) with NSEDC!"



**Dylan Johnson**  
*Education, Employment, & Training Director*

Originally from Nome and a graduate from Nome-Beltz High School, Dylan Johnson started with NSEDC during college as a scholarship recipient and summer Fisheries Technician with the Fisheries Research & Development Department.

Dylan graduated from the University of Alaska in 2019 with a major in Elementary Education. She enjoys the outdoors and traveling, and started her teaching career in Australia. She now resides in Anchorage and joins our team as the Education, Employment, and Training Director.

Dylan shares, "I am excited to work for NSEDC so I can give back to the community and corporation that helped me so much growing up in Nome. It will be nice to be on the other side, supporting the next group of young adults through these programs."



## Leslie Ladegard Human Resources Director

Leslie Ladegard is not a new face to NSEDC, but she is wearing a new hat at the Anchorage office as NSEDC’s new Human Resources Director.

Originally from White Mountain, Leslie first started with NSEDC as an intern in 2002 and 2003. She later came back to NSEDC in 2021, putting her dedication and work ethic to practice, first as a Community Benefits Specialist; followed by the Education, Employment, and Training Director; and now as Human Resources Director. Leslie shares, “From the very beginning, I’ve felt at home with NSEDC - welcomed, valued, and encouraged to grow and thrive. With my new position, I look forward to helping to ensure others have a similar experience to mine.”



*NSEDC Fisheries Biologists and Fisheries Technicians team up at the Snake River in Nome for an egg-take project.*



## JOIN OUR TEAM!

Learn more about open positions on our website! Or for more information:

Email: [hr@nsedc.com](mailto:hr@nsedc.com) or call (800)650-2248.

[www.nsedc.com/employment](http://www.nsedc.com/employment)

Norton Sound Economic Development Corporation offers an attractive compensation and benefits package including competitive pay, 401K retirement program, and comprehensive healthcare options.



*Renae Ivanoff works for NSEDC as Fisheries Research & Development Director.*

## Renae Ivanoff Celebrates 10 Years

NSEDC Fisheries Research & Development Director Renae Ivanoff celebrates ten consecutive years with NSEDC in 2024.

Born in Anchorage and raised in Unalakleet, Renae started with NSEDC doing summer work as a Fisheries Technician in 2009. Getting involved in telemetry and juvenile salmon projects through this seasonal position encouraged her to pursue a minor in fishery resources along with her biology major at the University of Idaho, where she graduated in 2011.

In March 2014, Renae joined NSEDC as a Fisheries Biologist. Renae felt very fortunate to get to work full time in biology in her hometown where, she says, she has gained valuable knowledge, both traditional and professional.

In 2022, Renae moved into the role of Fisheries Research & Development Director. Renae shares, “My current position is a reflection of my long-term commitment and I feel so elated to have come this far. I am still learning and growing and look forward to serving the Norton Sound region until I retire.”

PRSR STD  
US Postage  
PAID  
Anchorage, AK  
Permit No. 69



---

### **Anchorage Office**

2701 Gambell St., Suite 400  
Anchorage, AK 99503  
Phone: (907) 274-2248  
Fax/main: (907) 274-2249  
Fax/accounting: (907) 274-2258  
Toll free in AK: (800) 650-2248

### **Nome Office**

P.O. Box 358  
Nome, AK 99762  
Phone: (907) 443-2477  
Fax: (907) 443-2478  
Toll free in AK: (888) 650-2477

### **Unalakleet Office**

P.O. Box 193  
Unalakleet, AK 99684  
Phone: (907) 624-3190  
Fax: (907) 624-3183  
Toll free in AK: (800) 385-3190

### **Norton Sound Seafood Products (NSSP)**

#### **Nome Plant**

P.O. Box 906  
Nome, AK 99762  
Phone: (907) 443-2304  
Fax: (907) 443-2457  
Toll free in AK: (855) 443-2304

#### **Unalakleet Plant**

P.O. Box 323  
Unalakleet, AK 99684  
Phone: (907) 624-3014  
Fax: (907) 624-3808  
Toll free in AK: (855) 232-3014

#### **Savoonga Plant**

P.O. Box 156  
Savoonga, AK 99769  
Phone: (907) 984-6859  
Fax: (907) 984-6179